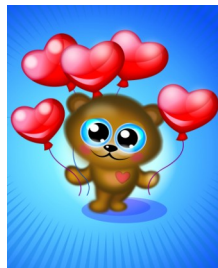


# SIGNALS From the Hill



FEBRUARY 2012

SIGNALS EDITOR  
DEE LABARCA

## *Principal's Message - Mrs. Tali Axelrod*



We all tend to begin the new year by making resolutions that this year will be better than the last. At Indian Hill School, one of our New Year's resolutions for 2012 was to foster good character through our many charitable acts both in the classroom and in the school community. Our teachers are continuing with our character education program, Morning Meeting, and we are all working together to create a positive school climate.

Under the direction of our new Student Council advisor, Ms. Jackie Mercandetti, the Student Council planned many charitable opportunities for Indian Hill School families to share with others less fortunate during this past holiday season. Our students brought in canned goods to donate to a local food pantry and teachers joined in giving a holiday gift basket to 3 needy Indian Hill families. Enclosed in the baskets were gift cards from our generous PLG parents totaling \$500 in donations and food for the families.

In addition, our student council students are sponsoring Hats on Day - a national fundraiser founded by kids and for kids. Students donate \$1.00 for the privilege of wearing a hat of their choice during school. All proceeds will then be donated to The Foundation for Children with Cancer. Why hats? Many times, students battling pediatric cancer lose their hair and must wear hats to

school following chemotherapy or radiation treatments. We thank you for modeling generosity and caring at home. We are so proud of our children for wanting to get involved in so many charitable activities!

We have had some wonderful cultural events here at Indian Hill. It was standing room only as parents, grandparents and friends enjoyed two fabulous concerts presented by Indian Hill's bands and chorus. Under the direction of our fine music teachers, our music students have performed beautifully and have learned so much this year. In addition, the PLG sponsored a wonderful assembly for our students entitled: Shakespeare Guyz. During the week prior to the assembly, our student council members shared fun facts about Shakespeare and Ms. Mary Sullivan, one of our 5<sup>th</sup> grade teachers, read aloud from a Shakespeare play on the morning announcements. All of these resulted in students gaining important background knowledge of the great William Shakespeare prior to the performance. During the performance, students were enraptured by the performers as they laughed and joined in during this interactive show.

I am delighted to tell you that we have a new Talent Show Advisor. Mrs. Meredith Thomas is doing an excellent job auditioning our talented students for the upcoming show on February 23<sup>rd</sup>. Please mark your calendars for this great evening production.

We also look forward to our spring musical, always a wonderful, talent-filled production as well.

At this time, I would like to wish you and your family all the best for a very happy and healthy 2012!

## Calendar of Events

- 2/7 PLG Meeting - 9:15 AM
- 2/10 Winter Boardwalk 5-9 PM
- 2/17-20 School Closed - President's Weekend
- 2/23 Talent Show—7 PM
- 2/24 World Language Fair
- 2/27- Gertrude Hawk
- 3/9 Fundraiser
- 3/6 PLG Meeting—9:15 AM
- 3/21 Professional Staff Day  
4 Hour Session
- 3/22 PLG Career Day
- 3/22 Newsletter Deadline
- 4/2 End of Marking Period 3
- 4/3 PLG Meeting—9:15 AM
- 4/5 Cheeburger Cheeburger Fundraiser
- 4/5 4 Hour Session
- 4/6—4/13 Spring Recess



## *Asst. Principal's Message* - Mr. Michael Ferrarese

I am very excited to be making my first contribution to "Signals from the Hill" as your new Assistant Principal. After over a decade of working with students as a Social Studies teacher, I am ready to take on the challenges and responsibilities that will face me as a building administrator. Since arriving in late November, I have had the pleasure of working with students, staff, and a community that is second to none. Everyone has gone above and beyond to make me feel welcome here at Indian Hill School, and for that I am very grateful. As I acclimate myself to this fine school, I am continuously impressed by the fine work displayed throughout our classrooms; a testament to the dedication of our teachers and strong support from our Holmdel parents.

Prior to the winter break, students at all grade levels participated in the State-sponsored "Season of Service" program. In this program, students were encouraged to write letters to the brave members of our armed forces serving overseas. In these letters, students expressed gratitude to these servicemen/women while also sharing some of their holiday plans and traditions in hopes of raising holiday spirits to those far from their loved ones. With the support of our staff, Indian Hill School students composed and mailed over 300 letters that were received in time for the winter holidays. Most letters were written during Indian Hill's "Morning Meeting" sessions which allowed for group discussions about patriotism and service.

Also at Indian Hill School was the annual National Geographic sponsored "Geography Bee". All students from our three grades took qualifying tests challenging their knowledge of world geography. From those qualifying tests, ten students went on to compete in the school-wide

bee on January 13<sup>th</sup>. After many rounds of fierce competition, one student emerged as the champion. He will move on to take a qualifying exam to participate in the state-wide competition. Congratulations to all students that participated and thank you to Ms. Bradley for coordinating the event.

In other news, Holmdel Township Schools has purchased the use of Study Island, an online, interactive program that helps our students prepare for the NJASK. Students have already taken the benchmark assessment which then prompts the website to generate future assignments based on individual student results. Because this program is internet based, it can be used anywhere where there is internet access. All student work on the site is virtually analyzed to assess student progress and gauge their readiness for the NJASK test. Aside from the traditional question formats, Study Island also features a game component that the children enjoy. Please help us in encouraging your child to utilize this valuable resource at home. If you have any questions regarding your child's log-in information, please reach out to your child's teacher.

In all, I would like to again thank the entire Indian Hill School community for making me feel right at home. It has been a wonderful transition and I look forward to the many great activities that lay ahead.

**REMINDER: Early band and chorus begin at 8:10 am. Please drop off your child at 8:00 am, not earlier - there is no supervision in the school until then.**

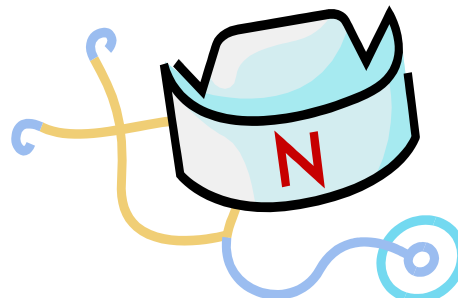
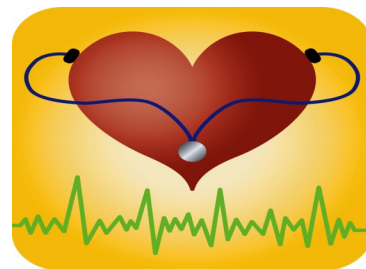
## "Health Notes" -

Barbara Wagner, RN -

Hello all you busy moms/dads out there...I know it is difficult to take care of your family, and yourselves. But Heart disease is the #1 Killer of women! February 3, 2012 is Go Red For Women Day. You can make a donation of any amount to the American Heart Association to further research for women's health. Please also wear red to support the efforts that day. Please take a look at this informative video, and see the attached materials. TAKE CARE OF YOU!!!

<http://www.goredforwomen.org/?popup=little-heart-attack>

Thank you Barbara Wagner, RN  
IHS Nurse



Welcome to 2012!

I hope you and your families have enjoyed a nice break and had a Happy New Year!

Our "Kids Only Holiday Shop" was a great success to all who volunteered, especially to our Chairs, Sue Bossert and Monica Guarnaccia. Thank you very much ladies!

Our biggest fundraiser of the year is coming up, the "Winter Boardwalk" will be held on Friday, February 10, 2012, from 5:00pm to 9:00pm. So, save the date! There will be lots of fun things for everyone, games, carnival food, classroom basket raffles, and of course our Grand Prize Auction! If you can volunteer, please feel free to contact me at [christinerdd@aol.com](mailto:christinerdd@aol.com). Please remember that all children need to be accompanied by an adult, this is a fun family night and your children look forward to it every year! Remember to look for different forms in your child's backpack for tickets, classroom basket donations, food donations and raffle tickets.

On March 22, 2012, we will have our annual Career Day, the children look so forward to having their parent come in and talk to their classmates about their exciting jobs! If you have already volunteered, I thank you. If you would like to you can e-mail me at [christinerdd@aol.com](mailto:christinerdd@aol.com) and I will pass on the information, please keep in mind, we serve you a fabulous luncheon and have bagels and coffee for breakfast!

And last, but certainly not least, our school nurse is looking for some extra clothing for all different types of spills and accidents. If you are looking to clean out a closet or a drawer, she is looking for sweatshirts, t-shirts (long and short), sweat pants, and coats. You can have your child bring them to school with just a simple note for the nurse.

Our next PLG meeting will be held on Tuesday, February 6, 2012 @ 9:15 in the cafatorium. We always have coffee and bagels, and I am always looking for a new person to meet! If you have any questions or concerns, please feel free to call me at 732-946-1094 or by email at [christinerdd@aol.com](mailto:christinerdd@aol.com).

Thank you for your help!  
Christine Reddington  
PLG President

IT'S TIME TO  
SEARCH  
THROUGH  
YOUR PANTRY  
FOR OUR  
WINTER BOX  
TOP COLLEC-  
TION !!!



It's that time of year! This is a fun way for our children to get involved in helping our school earn dollars towards our fundraising efforts. In the fall we raised \$544 for Indian Hill. We hope we can double it this year! We will be giving each homeroom teacher some sheets to go home with the students on which the box tops will be collected. We will be having a contest once again to see which homeroom can bring in the most box tops. We will have a prize for the first place winner in each grade. Specific instructions will be coming home in your child's folder, but please start collecting now as our second collection will be on **Friday, February 25<sup>th</sup>** during the lunch periods.

If you have any questions, please feel free to contact me.

Colleen Fischer (817-532-2536)



the difference  
i can make.

## *Holmdel Creative Arts Association News*

Dear Creative Arts members:

The Holmdel Students continue their creative works. The Satz students are performing Alice in Wonderland, Jr. Friday and Saturday, January 27 and 28 at 7pm and also a 3pm Matinee on Saturday.

The High School students are performing Once Upon A Matress on March 15, 16 and 17 at 7:30.

The District Art Show Reception is Wednesday March 14 and will continue displaying the student works throughout the week following. Come to the District Show and then stay on to see the High School Play! The HCAA will be providing refreshment at the opening on Wednesday, March 14. Student works from the entire district will be on display.

Please email me if you have any suggestions or questions, we appreciate all input. Parents can still join the HCAA, forms are on the district web site.

Our next meeting is Monday, February 6th at 9am in the HS Library Conference Room. Stop by and hear what is going on in the arts in our district!

Sincerely,

Mary Pomarico  
HCAA President 2011-12  
Mpomarico1@verizon.net



### ***PLG Meeting Dates***

Tuesday, Oct. 4, 9:15 am Tuesday, Nov. 1, 9:15am  
Tuesday, Dec 6, 9:15 am Tuesday, Jan.3, 9:15 am  
Tuesday, Feb. 7, 9:15 am Tuesday, Mar. 6, 9:15 am  
Wednesday, Apr. 3, 9:15 am Tuesday May 1, 9:15 am  
Tuesday, June 5, 9:30 am @ Red Oak

### ***Signals Deadlines:***

November 17th January 19th  
March 22nd & May 17th

Email articles to: [threede@comcast.net](mailto:threede@comcast.net)



## *Fundraising News*

The Indian Hill Boardwalk will be held on Friday 10, 2012 from 5 p.m.-9 p.m.. There will be plenty of games with prizes along with bungee/joust combo, skee ball, twister and so much more. The café offers a wide array of treats including pizza, hotdogs, burgers, popcorn, soft pretzels and drinks. Come join the fun while supporting your school. If you are interested in volunteering or need community service hours please contact  
[Carolyn.zofchak@mail.alzointernational.com](mailto:Carolyn.zofchak@mail.alzointernational.com).

The Gertrude Hawk Chocolate Sale Fundraiser is approaching. Sale begins in February – chocolate will be delivered in March – just in time for Passover and Easter! Keep on the lookout for packet in kids mail!





## *Membership News*

It's hard to believe January's almost over! As we approach the mid-year point, I was reflecting on some of the programs that were brought about by the PLG, including Hang Outs, Kids Only Holiday Shoppe, Shakespeare, as well as exciting events also planned by the PLG (e.g., Winter Boardwalk & Career Day) in the months ahead.

>

This has made me appreciate how much my child's Indian Hill School experience is enhanced by the PLG.

>

> We need your help to fund these programs. At this time, our membership level is only at 57%. (Kudos to Ms. Bradley's HR Class 8, which leads the pack at 91% participation!)

>

Please join us so your children can continue to benefit. If you have not already done so, please show your support by sending in \$5.00 to "PLG Membership".

>

Thank you. Happy Year of the Dragon!

Amy Lem

1<sup>st</sup> Vice-President, Membership

## **SCHOOL STORE**

The school store will be held in the cafeteria during your child's lunch periods. We sell anything from pencil erasers to locker novelties and anything in between, priced from 10 cents to \$4.00. It is held every Thursday, unless there is a conflict with Indian Hill on that day, i.e., early dismissal, Holiday Shop, etc. If you would like to volunteer for future dates, please contact Eileen Galarza at [eizzy825@hotmail.com](mailto:eizzy825@hotmail.com).



## **LABELS FOR EDUCATION**

While you are looking through your pantry for box tops, please look for labels for education. They can be found on soup cans as well as other food and household products. This too can help our school earn points towards a purchase that will benefit our children at Indian Hill, a selection made by Ms. Axelrod. The children will be bringing home these collection sheets as well. Please call if you have any further questions. Thank you!!

Colleen Fischer (817-532-2536)



## **CAREER DAY**

March 22, 2012

There is still time to sign up for Career Day! Come spend the day showing our students how interesting and rewarding work can be. Share a magnificent lunch with the other presenters and your child's teachers. It's a fun, exciting day and the kids enjoy having their parents talk to their class. To sign up contact Alicia Baylock (732) 332-0744 or [avbaylock@verizon.net](mailto:avbaylock@verizon.net).

Everybody loves Career Day - come be a part of it!

## *News from Guidance - Mrs. Eileen Calvert*

On January 5, 2011, New Jersey's Anti-Bullying Bill of Rights Act was signed into law. All school districts in our state were required to begin implementation this school year.

A great deal of work has taken place over the summer to enable our faculty, staff and administration to be fully informed of their professional responsibilities in contributing to a safe, respectful and effective teaching and learning environment. All of the district's employees attended a two hour training on the first day of school and numerous conversations have taken place to maximize each employee's ability to report and address any issues that may arise. On an administrative level, our team has participated in comprehensive training on the implications of the law on typical discipline procedures. These procedures have been reviewed and aligned with the HIB process for reporting and investigation. A full copy of this policy can be found on the following district web site:

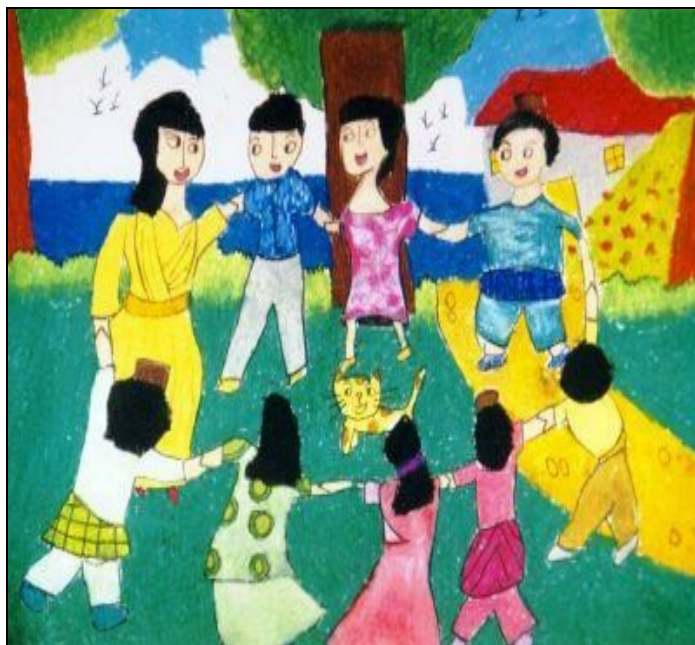
[http://www.boe/policies/5000/5145\\_harr\\_intim\\_bullying\\_hazing\\_pol.pdf](http://www.boe/policies/5000/5145_harr_intim_bullying_hazing_pol.pdf)

Each school in our district has an Anti Bullying Specialist (these names can also be found on our district's website). As the Anti- Bullying Specialist for Indian Hill School, I would like to provide you with information on what this new law means for our school and to your child.

Whenever there is a report of harassment, bullying or intimidation (as defined in the law), this act requires that a formal investigation follow. Parents will be notified if their child is involved in an investigation. We are required to report the outcome of each investigation to the parents, Superintendent, and Board of Education, as well as maintain records of findings of harassment, intimidation and bullying in student discipline records. Each school has a Safety Committee in place which will be responsible for discussing and strengthening procedures and policies that prevent, identify and address harassment, intimidation, and bullying in the district.

Parents are partners in this effort and our commitment to keep you informed and knowledgeable about HIB initiatives is of critical importance. Parents will be represented on the school safety teams at each building. We are fully aware that children this age are still learning and developing the skills necessary to make positive choices and every effort will be made to continue to provide them with the appropriate strategies and coping skills to do so.

Our commitment is to continue to provide our students with a safe and respectful environment which supports optimum teaching and learning. If you have any questions regarding this new policy please feel free to contact me at any time.



## Using Study Island from Home

Since the Study Island state assessment program is completely web-based, students can access it from any computer with an Internet connection and a standard web browser (Internet Explorer or Netscape). Results from students study sessions are recorded and made available to the teachers. This includes results from sessions completed at home.

The program is divided into sections based on subject (math, reading, etc.). Each section is made up of 10 to 25 **topics**, which contain about 20 to 25 questions each. Many topics are accompanied by a **lesson**, which includes some brief information about the material covered by the questions in the topics. It is helpful to view the lesson before answering the questions in the topic.

### Follow the instructions below, in order to use the program:

Go to [www.studyisland.com](http://www.studyisland.com)

Enter your username and password at the upper-left of the screen, and click "Login".

#### Note:

**Your child's username is:**


**Firstname.lastname@ihes** (example – jane.smith@ihes)

**Your child's password is: student**

3. Click on the topic your child has been assigned by his/her teacher. If no topic has been assigned, then click on the section tab (math, reading, etc.) that you wish to work on.

4. Click the "Pretest" in order to begin the pretest for the section. **You must complete 10 pretest questions before moving on to the topic you choose.**

5. Once you complete the "Pretest," you may work through the remainder of the topics in any order you like. **This is only if you teacher has not pre-selected a topic for you.**

To **pass** a topic, you must satisfy the group's passing requirements which are based a minimum number of questions answered (usually 10) and a minimum percentage correct (around 70%). A blue ribbon icon  is displayed next to all passed topics.

#### To access the Reports:

1. After your child has logged in, select a subject from the left-hand side of the screen to access the reports.

Here, you will find a variety of reports with information such as how much time your child has spent on various subjects, how they used their time, and what questions they missed. You will also be able to compare your child with other children in their class and in their state that are using Study Island. You can select reports by Subject or select the Summary option to get all subjects.

# Health Risk Factors • Signs Of a Heart Attack and Stroke

## Overview

More women die of cardiovascular disease than from the next four causes of death combined, including all forms of cancer. But 80 percent of cardiac events in women could be prevented if women made the right choices for their hearts involving diet, exercise and abstinence from smoking. Make it your mission to learn all you can about heart attacks and stroke — don't become a statistic.

## Heart Attack

A heart attack occurs when the blood flow to a part of the heart is blocked, usually by a blood clot. If this clot cuts off the blood flow completely, the part of the heart muscle supplied by that artery begins to die.

### Signs of a Heart Attack

1. Uncomfortable pressure, squeezing, fullness or pain in the center of your chest. It lasts more than a few minutes, or goes away and comes back.
2. Pain or discomfort in one or both arms, the back, neck, jaw or stomach.
3. Shortness of breath with or without chest discomfort.
4. Other signs such as breaking out in a cold sweat, nausea or lightheadedness.
5. As with men, women's most common heart attack symptom is chest pain or discomfort. But women are somewhat more likely than men to experience some of the other common symptoms, particularly shortness of breath, nausea/vomiting and back or jaw pain.

**If you have any of these signs, don't wait more than five minutes before calling for help. Call 9-1-1. Get to a hospital right away.**

## Stroke

Stroke is the No. 3 cause of death in America. It's also a major cause of severe, long-term disability. Stroke and transient ischemic attack (TIA) happen when a blood vessel feeding the brain gets clogged or bursts. The signs of a TIA are like a stroke, but usually last only a few minutes. If you have any of these signs, don't wait more than five minutes before calling for help. Call 9-1-1 to get help fast if you have any of these, but remember that not all of these warning signs occur in every stroke.

### Signs of Stroke and TIAs

1. Sudden numbness or weakness of the face, arm or leg, especially on one side of the body
2. Sudden confusion, trouble speaking or understanding
3. Sudden trouble seeing in one or both eyes
4. Sudden trouble walking, dizziness, loss of balance or coordination
5. Sudden severe headache with no known cause

Also, check the time so you'll know when the first symptoms appeared. It's very important to take immediate action. Research funded by the American Heart Association has shown that if given within three hours of the start of symptoms, a clot-busting drug can reduce long-term disability for the most common type of stroke.

**Learn more about heart attack and stroke at [heart.org](http://heart.org).**



Shermane, 40  
Stroke Survivor

“When I experienced sweating, a tightness in my chest and blurred vision while on a date with a great guy, I thought I was just excited and was completely ignorant to the warning signs of a stroke. Now I'm Making It My Mission to educate all women about the dangers of heart disease, the importance of knowing their cholesterol and blood pressure numbers and their family history.”

[GoRedForWomen.org](http://GoRedForWomen.org)



American  
Heart  
Association



nationally sponsored by





# Join Indian Hill in our Recycling Brigade

Indian Hill has partnered with Terracycle to further enhance the **GREEN EFFORT** in our school. Terracycle will donate .02 cents to our school for each recycled item. Terracycle upcycles these items into new products, thus saving numerous items from ending up in landfills. We are collecting the following items:

Capri Sun/  
Honest Kid



Cookie Wrappers



Snack Bags



Tape Dispensers/Rings



Glue Sticks/  
Bottles



Pens/Markers



Collection bins for drink pouches, snack bags and cookie wrappers can be found in the Cafeteria. Bins for glue sticks/bottles, tape dispensers/rings and plastic pens and markers can be found at the school's Main Entrance. Any questions, please contact the PLG Go-Green Committee at [gogreenindianhill@yahoo.com](mailto:gogreenindianhill@yahoo.com).



# "SANDS OF TIME"

THE HOLMDEL FOUNDATION FOR EDUCATIONAL  
EXCELLENCE (HFEE)  
INVITES YOU TO ATTEND OUR

## SPRING DINNER DANCE

SATURDAY, MARCH 10, 2012

6:30 p.m. – 11:30 p.m.

TRUMP NATIONAL GOLF CLUB  
IN COLTS NECK

\$150 PER PERSON    COCKTAIL ATTIRE

PLEASE JOIN US IN CELEBRATING THE CHILDREN OF HOLMDEL  
WITH OUR BIGGEST FUNDRAISER OF THE YEAR.

- GOURMET COCKTAIL HOUR AND SIT DOWN DINNER
- ENTERTAINMENT FROM THE ACCLAIMED HOLMDEL HIGH SCHOOL JAZZ BAND AND DJ JOEY FROM "THIS IS IT ENTERTAINMENT"
- RAFFLES, PRIZES, BASKETS, LIVE AND SILENT AUCTIONS INCLUDING A LOUIS VUITTON TOTE AND A FOURSOME AT TRUMP NATIONAL

TICKETS ARE AVAILABLE FOR PURCHASE STARTING  
MONDAY, JANUARY 16, 2012.

FOR MORE INFORMATION, PLEASE VISIT OUR  
WEBSITE AT [WWW.HFEE.ORG](http://WWW.HFEE.ORG)



**DO ALL OF YOUR  
SHOPPING WITH THE HFEE!**

***Over 600 Retailers to Choose From!***

**Just to name a few:**

**American Express, Amazon.com, GameStop, Toys R Us,  
Macy's, iTunes, Staples, Sports Authority, Starbucks & more!**

**Even if you aren't gift giving, Scrip has many choices for your  
everyday purchases at Shop Rite, Jiffy Lube, Target, Chili's & more!**

**THE SCRIP PROGRAM ALLOWS YOU TO PURCHASE GIFT CARDS TO *OVER 600 OF  
YOUR FAVORITE RETAILERS* AT FACE VALUE WHILE ALSO MAKING A  
CONTRIBUTION TO THE HFEE. VISIT **SHOPWITHSCRIP.COM** FOR A COMPLETE  
LIST OF PARTICIPATING RETAILERS.**

You can also check out the list of participating retailers via the link on our website,  
**[www.HFEE.org](http://www.HFEE.org)**.

There are several ways to proceed...the choice is yours!

1. Complete this ORDER FORM and mail it with a check made payable to  
"HFEE":

Mail to: HFEE, 65 McCampbell Road, Holmdel, New Jersey 07733

2. Use our PAYPAL feature by visiting our website, [www.HFEE.org](http://www.HFEE.org).  
(Provide details of your purchase.)

3. Go to SHOPWITHSCRIP.COM, set up an account to shop directly.  
Please use our ENROLLMENT CODE: 928C6C6626753 (Case sensitive)  
Scrip also offers eCards and PrestoPay, an electronic funds transfer feature.

If you have any question, please contact Chimin Hu-Hampel @732-739-1568  
or [chiminhu@gmail.com](mailto:chiminhu@gmail.com).

**ORDER PERIODS:**

Orders Placed By 01/14 will be delivered by 01/23

Orders Placed By 02/14 will be delivered by 02/23

Orders Placed By 03/14 will be delivered by 03/23

**"This fundraiser is not endorsed by the Holmdel Township Board of Education"**

*Holmdel Foundation for Educational Excellence*

*www.HFEE.org*

**SCRIP ORDER FORM**

Mail To: HFEE, 65 McCampbell Road, Holmdel, NJ 07733

Make Check Payable to: HFEE

Name: \_\_\_\_\_ Tele.#: \_\_\_\_\_

Address: \_\_\_\_\_

Check #: \_\_\_\_\_ Order Date: \_\_\_\_\_

E-Mail: \_\_\_\_\_

Order Period (Check off Order Period):

\_\_\_\_\_ 1/14 for delivery by 1/23

\_\_\_\_\_ 2/14 for delivery by 2/23

\_\_\_\_\_ 3/14 for delivery by 3/23

\_\_\_\_\_ 4/14 for delivery by 4/23

STORE NAME	\$DENOMINATION	QUANTITY	SUBTOTAL
1.			
2.			
3.			
4.			
5.			
6.			

TOTAL \$\_\_\_\_\_

"This fundraiser is not endorsed by the Holmdel Township Board of Education"



Holmdel Foundation for Educational Excellence (HFEE)

*Sands of Time* Dinner Dance Ad Journal

March 10, 2012

**Inscribe a Pyramid with...  
a message of good wishes !**

Personalized Message in the  
Ad Journal  
\$35 each or  
3 for \$100



NAME \_\_\_\_\_

PHONE NUMBER \_\_\_\_\_ EMAIL \_\_\_\_\_

MESSAGE: *Must be 12 words or less.* (Please print clearly on back or attach separate sheet)

**Payment by Check or Credit Card**

Please make checks payable to Holmdel Foundation for Educational Excellence

Credit Card # \_\_\_\_\_ Exp. Date \_\_\_\_\_

If you have any questions please contact Roseane Wriedt at [raw1roe@aol.com](mailto:raw1roe@aol.com)

Mail to: Roseanne Wriedt, 8 Lori Lane, Holmdel, NJ 07733

# Holmdel Foundation for Educational Excellence

## AD JOURNAL/MEMORY BOOK INSERTION ORDER

The Holmdel Foundation for Educational Excellence will hold its annual Spring Gala on Saturday, March 10, 2012 to help support Holmdel School programs. A commemorative program will be published and distributed to attendees, donors and advertisers.

**DEADLINE: FEBRUARY 1, 2012**

### -----Rates and Sizes-----

- |  |   |
|--|---|
| <input type="checkbox"/> BACK COVER ..... \$ 1,500       | <input type="checkbox"/> FULL PAGE:                   |
| <input type="checkbox"/> INSIDE BACK COVER ..... \$ 850  | <input type="checkbox"/> GOLD ..... \$ 500            |
| <input type="checkbox"/> INSIDE FRONT COVER ..... \$ 800 | <input type="checkbox"/> SILVER ..... \$ 350          |
| <input type="checkbox"/> HALF PAGE (V/H) ..... \$ 75     | <input type="checkbox"/> FULL PAGE COLOR ..... \$ 200 |
| <input type="checkbox"/> QUARTER PAGE ..... \$ 50        | <input type="checkbox"/> BLACK & WHITE ..... \$ 100   |

Name and Title (please print) \_\_\_\_\_

Company name \_\_\_\_\_ Tel# \_\_\_\_\_ Fax# \_\_\_\_\_

Address \_\_\_\_\_ City \_\_\_\_\_ State/Zip \_\_\_\_\_

### ADVERTISERS PLEASE SUBMIT AD:

- ☐ 1. Same as Last Year
- ☐ 2. Camera Ready Copy or Disk (enclosed)
- ☐ 3. Email copy directly (PDF **[preferred]**, Quark, Indesign, Publisher, making sure ALL FONTS & GRAPHICS USED ARE EMBEDDED OR INCLUDED) to [adjournal@printechny.com](mailto:adjournal@printechny.com); also fax a hard copy to (212) 643-2871. Please include a contact phone number in case there is a problem with your electronic art. Please specify for HFEE Ad Journal.

### AD & PAYMENT DEADLINE FEBRUARY 1, 2012

Please return this form with your ad choice and payment. Check one:

- ☐ Payment enclosed \$ \_\_\_\_\_.  
Please make check payable to: THE HOLMDEL FOUNDATION FOR EDUCATIONAL EXCELLENCE
- ☐ Payment was sent with ticket purchase on \_\_\_\_\_ (date).

### Payment by Check or Credit Card

Please make checks payable to Holmdel Foundation for Educational Excellence

Credit Card # \_\_\_\_\_ Exp. Date \_\_\_\_\_

Please return this form to:  
**Holmdel Foundation for Educational Excellence**  
c/o Joyce Magriples  
5 Ardmore Place  
Holmdel, New Jersey 07733

For additional information, please contact  
Joyce Magriples (732) 772-0068  
Roseanne Wriedt (732) 739-8573

## AD IMPRINT AREAS

QUARTER PAGE  
4-1/4" X 1-3/8"

FULL PAGE  
4-1/4" X 7-1/8"

HALF PAGE  
4-1/4" X 3-1/4"